

Customer Care Solutions
RH-30/31 Series Transceivers

RH-30/31 Disassembly
Instructions

Table of Contents

	Page No
Disassembling RH-30/31.....	3
ADDITIONAL DISASSEMBLY OF RH-30/31	9

Disassembling RH-30/31

NOTE! Before you start

- Ensure that you are connected to the ESD wristband

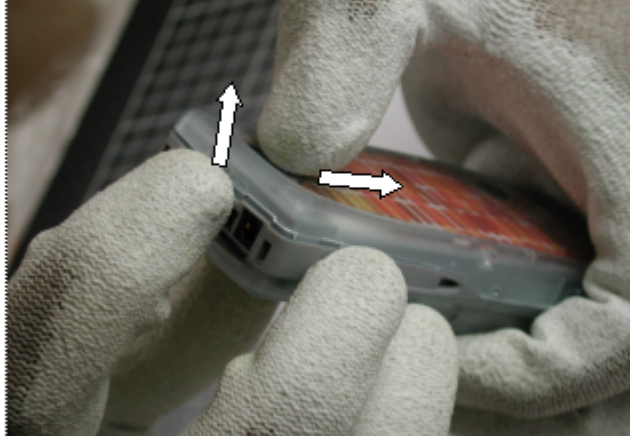
NOTE! While disassembling/assembling the phone

-Be careful when handling sensitive components

- Protect the LCD with a foil whenever possible

-Avoid touching sensitive spring contacts and connectors

1. Place the phone top down, side facing you. Press the Release Key and push the battery cover out from the phone.



2. Flip gently the A-cover out from the phone by pulling from top end of A-cover



3. Remove the Keymat

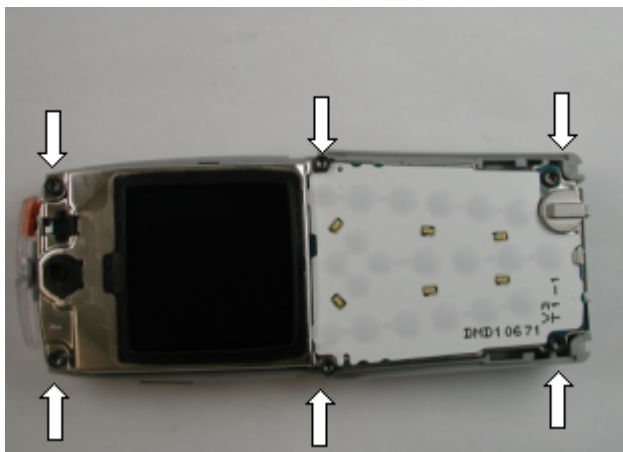


4. Remove the antenna by using the camera removing tool SRT-10.



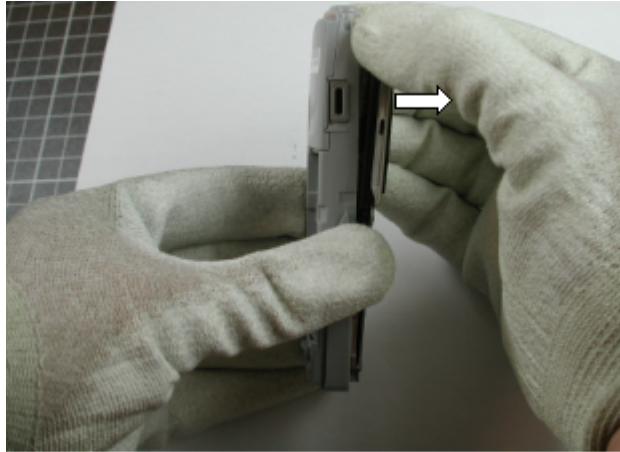
Note! Be careful not to damage mechanical parts. Do not touch the antenna plate inside without gloves

5. Remove the screws (6pcs) to get module out from C-cover (torque 21Ncm and speed 480 rpm)

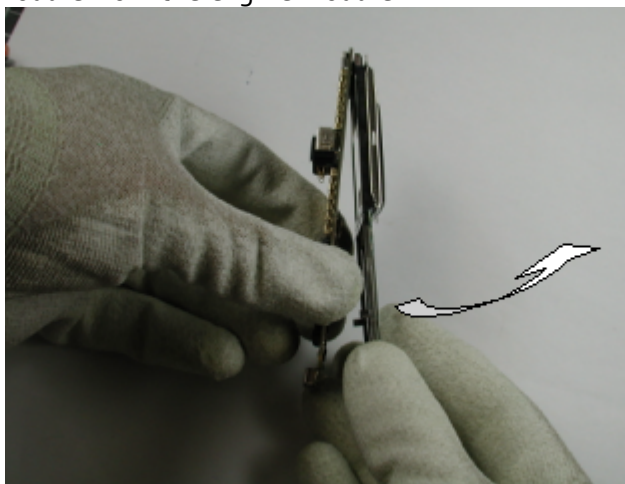


NOTE! Use always the specified tools.

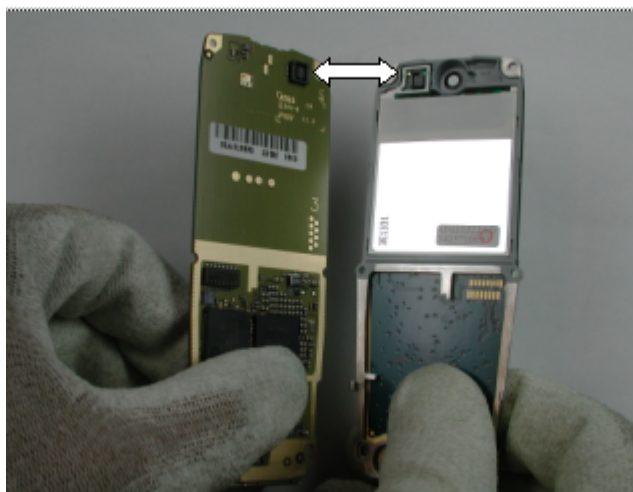
6. Remove the PWB/UI-module out from the C-cover.



7. Remove the UI module from the engine module.



NOTE! The UI module and the engine board are linked together by two board-to-board connectors. Be careful not to damage them (see also next picture).



8. Remove the microphone by pressing it from its edge, or take the tweezers between the frame and microphone and lift it out from the frame.

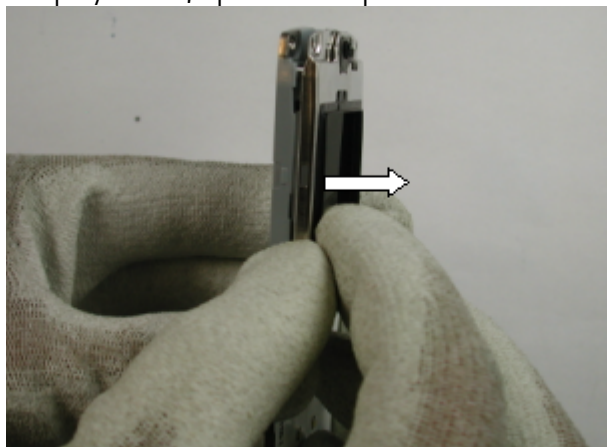


9. Remove the speaker by lifting it from the guiding pin.



NOTE! The speaker is attached into the frame by adhesive tape. Therefore, it may not loose easily.

10. To remove the Display shield, open the snaps from both sides and remove the shield



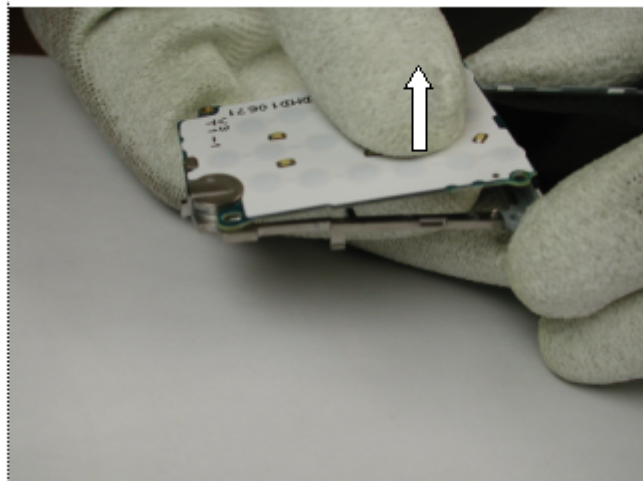
NOTE! Be careful not to damage the shield.

11. To remove LCD Module, keep the UI module in your hand widening the LCD frame a little at the same time at one side. Press the LCD module gently from the same side you are widening the LCD frame until LCD Module detaches.



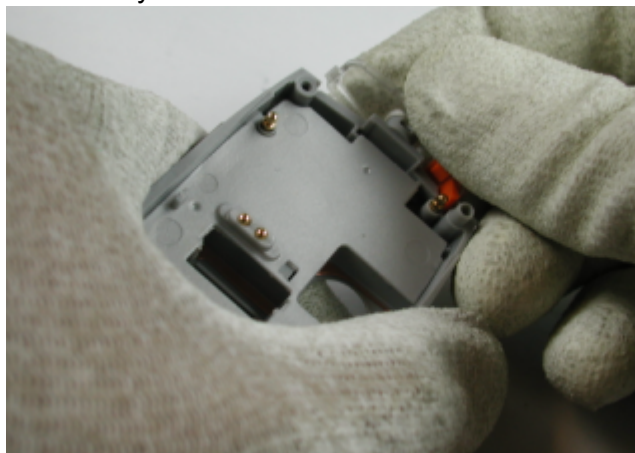
NOTE! Be careful not to damage sensitive parts. Do not press the LCD module hard.

12. Remove the UI Board from the LCD frame.



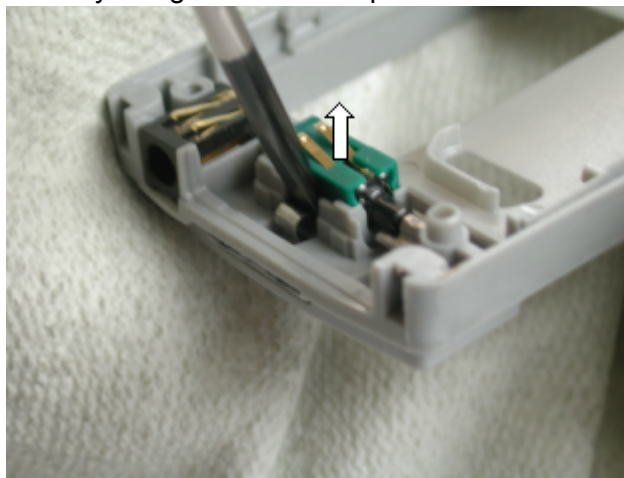
NOTE! Be careful not to damage the LCD Frame.

13. Remove the Power Key

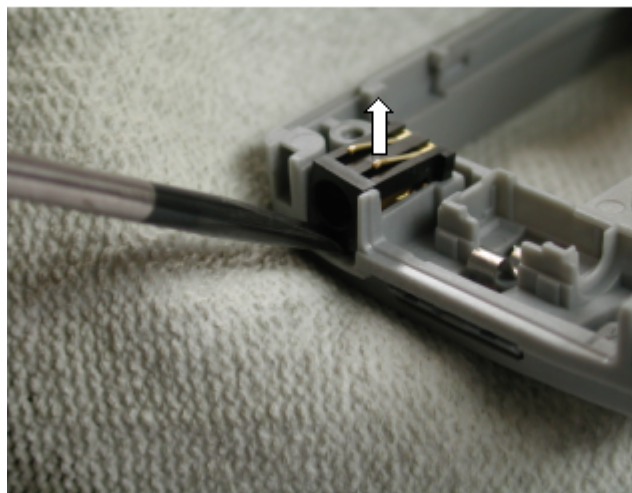




14. Remove the Vibra by lifting it out from its place

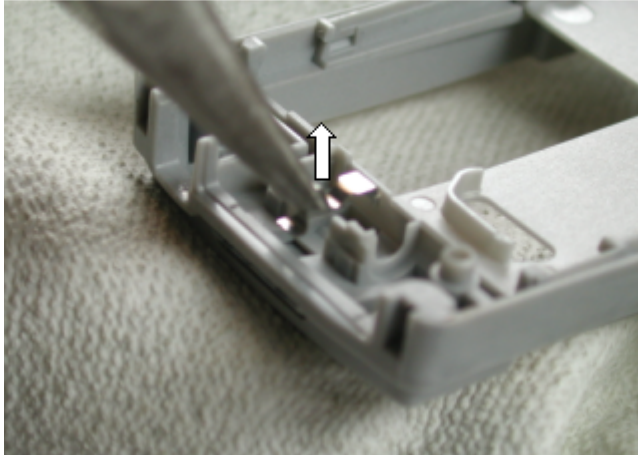


15. Remove the DC Jack by lifting it out from its place

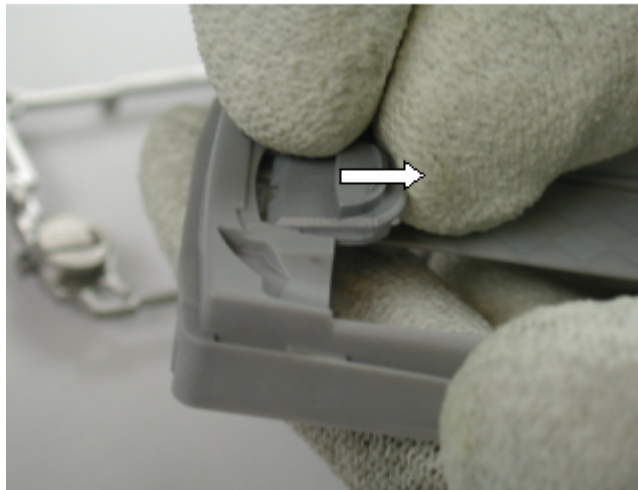


NOTE! Be careful not to damage to the C-cover.

16. Lift the Release Spring by tweezers from its place.



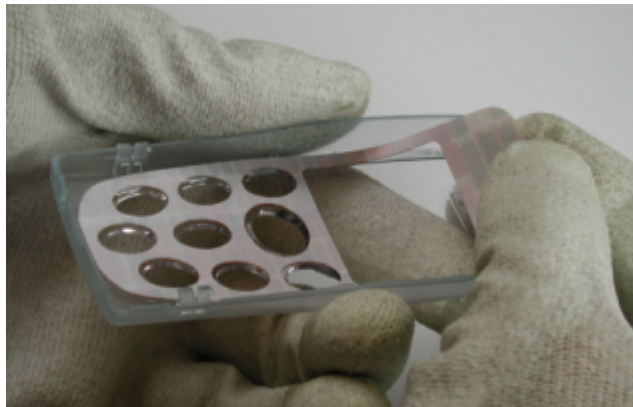
17. Remove the Release Key .



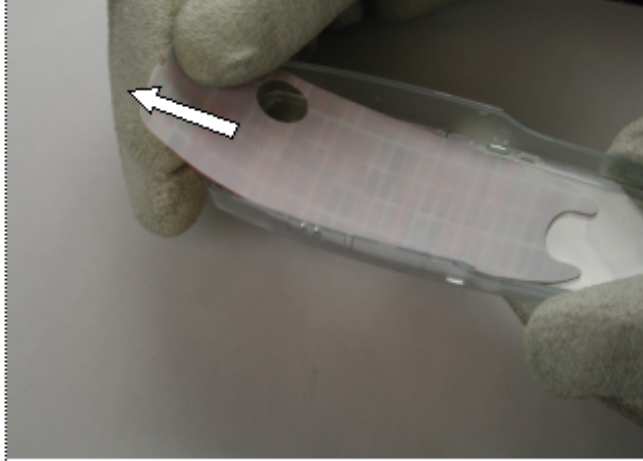
DISASSEMBLING COMPLETED

ADDITIONAL DISASSEMBLY OF RH-30/31

18. Remove the A-cut -cover from the A-cover



19. Remove the B-cut -cover from the B-cover



20. Flip the battery out of the phone

